

# Computers & Software

## PROJECT MANAGEMENT



PM Workbench is an integrated multi-project workbench designed to simplify and quicken project management, reducing risk and bolstering the bottom line. Features include a PM dashboard to provide an instant view of items requiring attention, and an interface design allowing easy access to RFIs, submittals, documents, issues, drawings, contacts, and daily reports.

— PENTA Technologies

FOR FREE INFORMATION CIRCLE: 700

## ENERGY MANAGEMENT SYSTEMS

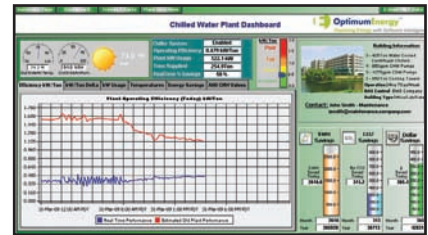
The EcoView™ Commercial energy management system features an on-site “dash board” touch panel for local control of thermostat settings; wireless communication; Web-based interface for real-time access, monitoring, and reporting; and centralized, remote control of thermostats including set-points, schedules, and heating and cooling limits that eliminate suboptimal local control.



— Advanced Telemetry, LLC

FOR FREE INFORMATION CIRCLE: 701

## BAS



OptimumHVAC tracks building performance remotely and measures and verifies equipment operations and savings on both a real-time and historical basis via the company's OptimumHVAC Measurement, Verification & Management Service. The program is compatible with all BAS and can be installed by any licensed mechanical or controls contractor.

— Optimum Energy, LLC

FOR FREE INFORMATION CIRCLE: 702

## BITS & BYTES

### Engineered Software, Inc.

has released the metric edition of the book, *Piping System Fundamentals: The Complete Guide to Gaining a Clear Picture of Your Piping System*, by author and trainer Ray T. Hardee, P.E. Formally only available in U.S. units, the comprehensive guide is now available in a metric edition. The *Piping System Fundamentals Metric Edition* covers all the same topics covered in the original U.S. edition but has all conversions done for the reader.

### Onset

has announced that Justin Testa has been hired as the company's new president. The company has also donated licenses of its HOBOWare® graphing and analysis software to 22 high schools in southern Idaho through Idaho Power's Students for Energy Efficiency Program. The program will be used to analyze school building energy use data which students are collecting with Onset HOBOWare® dataloggers.

### Spinwave Systems

has entered the market as a provider of datacenter monitoring solutions, offering wireless sensors with seamless integration to existing datacenter management systems and BAS. The company has also launched a wireless SNMP gateway (in addition to existing BACnet, LON, and Modbus gateways) that provides IT operators the flexibility to monitor temperature and humidity conditions using their already existing SNMP management interface.

### Greenheck

has released Version 4.2 of its Computer Aided Product Selection Program (CAPS). The AMCA certified CAPS program features a new user interface and includes product descriptions, application information, dimensional drawings, and detailed product performance data for all Greenheck products and CAD drawings for many products.

### Exele Information Systems

has announced major enhancements to its TopView® software suite with the release of v6.7. New features include SMS notification via GSM modem, SQL Server alarm logging, and alarm history integration with the alarm displays. SQL Server alarm logging allows users to store TopView alarm history in Microsoft® SQL Server, providing a secure and standard storage mechanism for alarm history.

## WORLD WIDE WEB

### UltraViolet Devices, Inc.

has unveiled a new corporate website at [www.UVDI.com](http://www.UVDI.com). The new website fully incorporates product and technical information from the UVDI®, ALTRU-V® and Sparks Technology™ brands in one web location. The new site also provides access to educational and informational resources regarding Ultraviolet Germicidal Irradiation (UVGI) technology and bonded activated carbon BPS™ (Bonded Particulate Structure) technology.

### Johnson Controls

has launched the York dealer destination Web site at [www.yorkhvacdealer.com](http://www.yorkhvacdealer.com), designed to support dealer growth and independence by providing easy access to technical information on the array of York heating and cooling products, business growth tools, and personalized marketing materials. Also included is a complete guide to York light-commercial products, including the compact 33-in., 98% AFUE gas furnace.

### Lochinvar®

has developed a library of drawings of its commercial products that are fully configured for placement in Autodesk® Revit® Architecture 2010 building information models. Architects, contractors, and designers using the 2010 edition of Revit software, which allows them to design with parametric modeling and drafting elements, can now download the pre-programmed, 3D Lochinvar equipment models for free at [www.Lochinvar.com](http://www.Lochinvar.com).

### Grundfos Building Services'

new website, Thinking Buildings Universe at [www.thinkingbuildings.com](http://www.thinkingbuildings.com), offers contractors and engineers a complete range of information and tools on commercial pumps to help make their building projects come together more smoothly.

### Autodesk Inc.

has announced the availability of major updates to its *Guide to Sustainable Design for Architecture, Engineering and Construction*. The free online guide, available at [www.autodesk.com/sustainabledesignguide.com](http://www.autodesk.com/sustainabledesignguide.com), helps architecture, engineering and construction professionals make better informed decisions to achieve building performance goals.